



MODULAR MULTIPLE 3-WAY VALVES

R-351

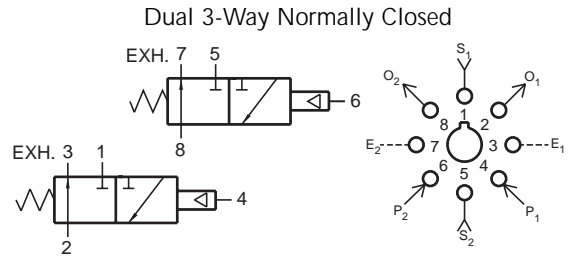
Dual Normally Closed 3-Way Valve

Features:

- Micro gap construction - snap action and no blow by
- Two independent valves in one module
- Saves space

Performance:

Flow: 9 scfm @ 100 psig; 255 l/min @ 6.9 bars
Pilot Pressure Minimum: 40 psig; 2.8 bars
Temperature: 32 to 180° F
Working Pressure: 0 to 150 psig; 0 to 10.3 bars



Description:

R-351 is a dual element combination of 2 independent, spring return, 3-way valves in a single manifold, set-up for normally-CLOSED usage only. Ports 3 and 7 are exhausts to atmosphere and cannot be restricted.

R-352

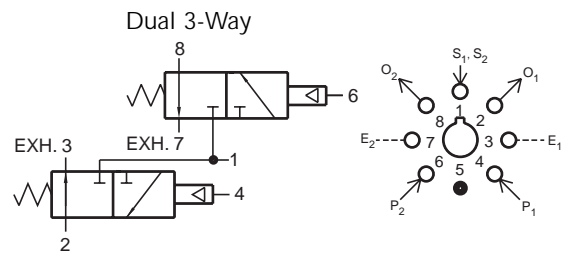
Dual 3-Way Valve

Features:

- Micro gap construction - snap action and no blow by
- Two independent units in one module
- Common supply eliminates extra piping

Performance:

Flow: 9 scfm @ 100 psig; 255 l/min @ 6.9 bars
Pilot Pressure Minimum: 40 psig; 2.8 bars
Temperature: 32° to 180° F
Working Pressure: 0 to 150 psig; 0 to 10.3 bars



Description:

R-352 is a dual element combination consisting of 2 independent, spring return, 3-way normally-CLOSED valves with a common inlet. Ports 3 and 7 are exhausts to atmosphere, and can not be restricted.